

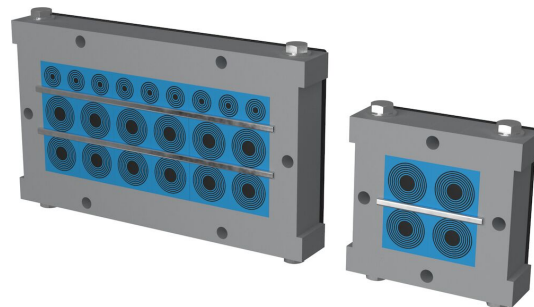


# Prostupy Roxtec CRF

Pro kabely nebo plastové trubky v kolejových vozidlech.

Prostup Roxtec CRF je navržen a testován pro kolejová vozidla. Lehký hliníkový rám lze otevřít, což usnadňuje počáteční instalaci i dodatečné úpravy, když je třeba přidat nebo vyměnit kabely či plastové potrubí. Do rámu lze namontovat buď těsnící moduly Roxtec CM a CM PPS s technologií Multidiameter™ pro přizpůsobení rozměrům kabelu, nebo moduly Roxtec CRF a CRF PPS pro rychlou sériovou výrobu se známými rozměry kabelů. Verze PPS u obou typů modulů poskytuje protipožární ochranu pro aplikace s plastovým potrubím.

- Odlehčené
- Kompaktní



## Vlastnosti výrobku



Protipožární



IP/UL NEMA

## Struktura instalace



Skříně a rozváděče

## Specifikace a certifikáty

### Protipožární ochrana

- Požární odolnost E/EI podle EN 45545 E30
- HL3 podle EN 45545-2 (R22, R23)

### Těsnost

- IP 66 podle IEC 60529

### Podporuje

- Kategorie rázů a vibrací 2 podle IEC 61373

## Rozměry rámu

mm/kg

Níže uvedené verze rámu jsou pouze některé možnosti. Úplnou nabídku rámu a konfigurací najdete na stránkách [roxtec.com](https://www.roxtec.com).

| Název               | Otvory rámu | Prostor utěsnění | Vnější rozměry<br>WxHxD | Rozměry otvoru<br>w x h | Hmotnost | Typ. č. |
|---------------------|-------------|------------------|-------------------------|-------------------------|----------|---------|
| CRF 60x60 ANODIZ    | 1           | 60 x 60          | 108 x 112 x 35          | 70(+0/-0) x 60(+0/-0)   | 0.73     | 214613  |
| CRF 80x160 ANODIZ   | 1           | 160 x 80         | 208 x 142 x 35          | 170(+0/-0) x 80(+0/-0)  | 1.27     | 214622  |
| CRF 80x180 ANODIZ   | 1           | 180 x 80         | 228 x 142 x 35          | 190(+0/-0) x 80(+0/-0)  | 1.35     | 214623  |
| CRF 80x200 ANODIZ   | 1           | 200 x 80         | 248 x 142 x 35          | 210(+0/-0) x 80(+0/-0)  | 1.46     | 214624  |
| CRF 60x90 ANODIZ    | 1           | 90 x 60          | 138 x 112 x 35          | 100(+0/-0) x 60(+0/-0)  | 0.83     | 214614  |
| CRF 60x120 ANODIZ   | 1           | 120 x 60         | 168 x 112 x 35          | 130(+0/-0) x 60(+0/-0)  | 0.89     | 214615  |
| CRF 60x160 ANODIZ   | 1           | 160 x 60         | 208 x 122 x 35          | 170(+0/-0) x 60(+0/-0)  | 1.2      | 214616  |
| CRF 60x180 ANODIZ   | 1           | 180 x 60         | 228 x 122 x 35          | 190(+0/-0) x 60(+0/-0)  | 1.27     | 214617  |
| CRF 2x60x180 ANODIZ | 2           | 180 x 60         | 428 x 122 x 35          | 190(+0/-0) x 60(+0/-0)  | 2.29     | 214618  |
| CRF 80x80 ANODIZ    | 1           | 80 x 80          | 128 x 132 x 35          | 90(+0/-0) x 80(+0/-0)   | 0.86     | 214619  |
| CRF 80x120 ANODIZ   | 1           | 120 x 80         | 168 x 132 x 35          | 130(+0/-0) x 80(+0/-0)  | 0.98     | 214620  |
| CRF 2x80x120 ANODIZ | 2           | 120 x 80         | 308 x 132 x 35          | 130(+0/-0) x 80(+0/-0)  | 1.61     | 214621  |

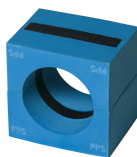


## Údaje o izolačních komponentách

### Těsnící komponenty



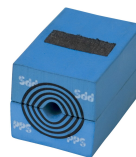
Moduly CRF



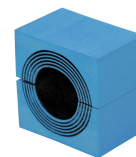
Moduly CRF PPS



Mazivo Blue



Modul CM PPS s technologií Multidiameter™



Modul CM s technologií Multidiameter™

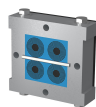


Kotevní destička C

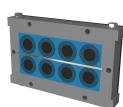
Podrobné informace najdete na stránkách [www.roxtec.com](https://www.roxtec.com).

## Konfigurované soupravy vstupů

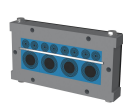
mm/kg



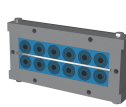
CRF 60x60/4 CM



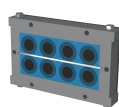
CRF 80x160/8 CM/PPS



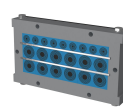
CRF 60x160/12 CM



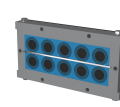
CRF 60x180/12 CM



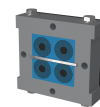
CRF 80x160/8 CM



CRF 80x180/21 CM



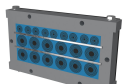
CRF 80x200/10 CM



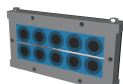
CRF 60x60/4 CM/PPS



CRF 60x120/9 CM/PPS



CRF 80x180/20 CM/PPS



CRF 80x200/10 CM/PPS

| Název                | Konfigurace                                   | Vnější rozměry<br>WxHxD | Rozměry otvoru<br>w x h | Hmotnost | Typ. č. |
|----------------------|---|-------------------------|-------------------------|----------|---------|
| CRF 60x60/4 CM       | 4x (10.0-25.0)                                | 108 x 112 x 35          | 70(+0/-0) x 60(+0/-0)   | 0.89     | 215951  |
| CRF 80x160/8 CM/PPS  | 4x (21.5-34.5), 4x (21.5-33.5)                | 208 x 142 x 35          | 170(+0/-0) x 80(+0/-0)  | 1.88     | 215959  |
| CRF 60x160/12 CM     | 8x (3.5-16.5), 4x (21.5-34.5)                 | 208 x 122 x 35          | 170(+0/-0) x 60(+0/-0)  | 1.65     | 215952  |
| CRF 60x180/12 CM     | 12x (10.0-25.0)                               | 228 x 122 x 35          | 190(+0/-0) x 60(+0/-0)  | 1.78     | 215953  |
| CRF 80x160/8 CM      | 8x (21.5-34.5)                                | 208 x 142 x 35          | 170(+0/-0) x 80(+0/-0)  | 1.85     | 215954  |
| CRF 80x180/21 CM     | 12x (10.0-25.0), 9x (4.0-14.5)                | 228 x 142 x 35          | 190(+0/-0) x 80(+0/-0)  | 1.99     | 215955  |
| CRF 80x200/10 CM     | 10x (21.5-34.5)                               | 248 x 142 x 35          | 210(+0/-0) x 80(+0/-0)  | 2.17     | 215956  |
| CRF 60x60/4 CM/PPS   | 2x (10.0-25.0), 2x (10.0-24.0)                | 108 x 112 x 35          | 70(+0/-0) x 60(+0/-0)   | 0.9      | 215957  |
| CRF 60x120/9 CM/PPS  | 3x (21.5-33.5), 6x (3.5-16.5)                 | 168 x 112 x 35          | 130(+0/-0) x 60(+0/-0)  | 1.19     | 215958  |
| CRF 80x180/20 CM/PPS | 6x (10.0-25.0), 6x (10.0-24.0), 8x (3.5-16.5) | 228 x 142 x 35          | 190(+0/-0) x 80(+0/-0)  | 1.99     | 215963  |
| CRF 80x200/10 CM/PPS | 5x (21.5-34.5), 5x (21.5-33.5)                | 248 x 142 x 35          | 210(+0/-0) x 80(+0/-0)  | 2.13     | 215964  |



The product information provided by Roxtec does not release the purchaser of the Roxtec system, or part thereof, from the obligation to independently determine the suitability of the products for the intended process, installation and/or use.

Roxtec gives no guarantee for the Roxtec system or any part thereof and assumes no liability for any loss or damage whatsoever, whether direct, indirect, consequential, loss of profit or otherwise, occurred or caused by the Roxtec systems or installations containing components not manufactured by an authorized manufacturer and/or occurred or caused by the use of the Roxtec system in a manner or for an application other than for which the Roxtec system was designed or intended.

Roxtec expressly excludes any implied warranties of merchantability and fitness for a particular purpose and all other express or implied representations and warranties provided by statute or common law. User determines suitability of the Roxtec system for intended use and assumes all risk and liability in connection therewith. In no event shall Roxtec be liable for indirect, consequential, punitive, special, exemplary or incidental damages or losses.

The Roxtec products are offered and sold in accordance with the conditions of the Roxtec General Terms of Sales. The latest version of the Roxtec General Terms of Sales can be downloaded from <https://www.roxtec.com/en/about-us/about-roxtec/general-terms-of-sales/>

We reserve the right to make changes to the product and technical information without further notice. Any errors in print or entry are no claims for indemnity. The content of this publication is the property of Roxtec International AB and is protected by copyright.

This document was generated on: 2026-04-29

